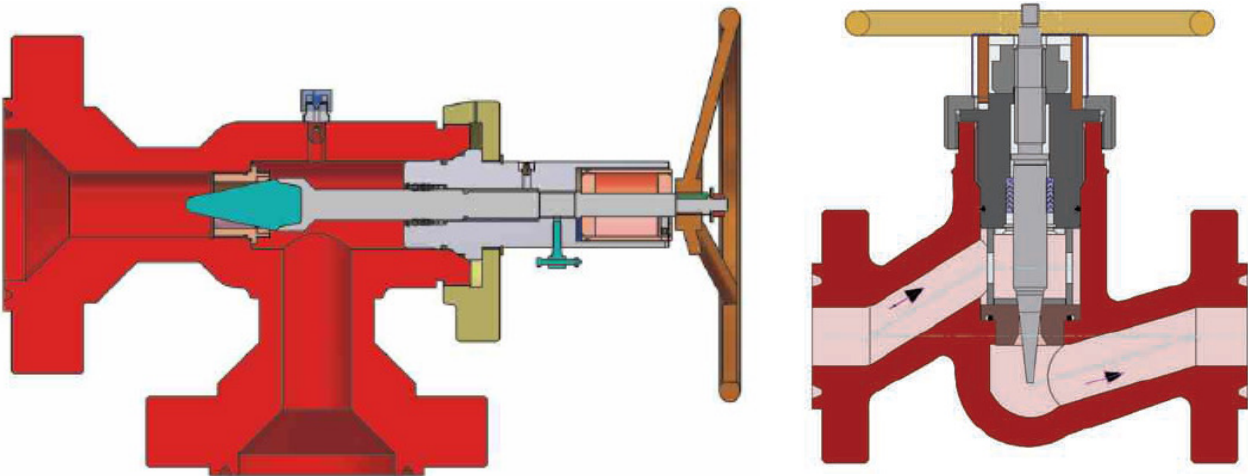




Written By	R. B. Parmar
Checked by	J. V. Mistry
Approved By	V. M. Shah
Revision	00
Rev./Rel. Dt.	04/05/2009
Page	Page 1 of 2

Features

- Pressure rating: 2K, 3K, 5K, 10K and ANSI classes up to 4500.
- Bonnet may be hammer union or bolted type.
- Bonnet nut with vent hole for safety during servicing.
- Dynamic seal (stem packing) uses spring energized seals.
- Micrometer indicator barrel calibrated in 1/64" 'Bean Size'.
- Body/bonnet materials include carbon steel, alloy steel, stainless steel and duplex stainless steel.
- In-line or angle body options.



Nominal Body Size (other sizes available)	End connections	Trim Size
2"	API Flanges 2 1/16" to 3 1/8" ANSI Flange 2", 3"	1" (64/64") 1.5" (96/64")
2.5"	API Flanges 3 1/8" to 7 1/16" ANSI Flanges 2" to 6"	2" (128/64")
3"	API Flanges 3 1/8" to 7 1/16" ANSI Flanges 2" to 6"	2" (128/64")

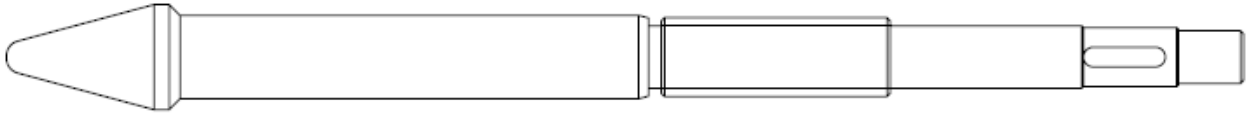


Note: This is for understanding only. Please refer to JVS for detailed design & technical information.

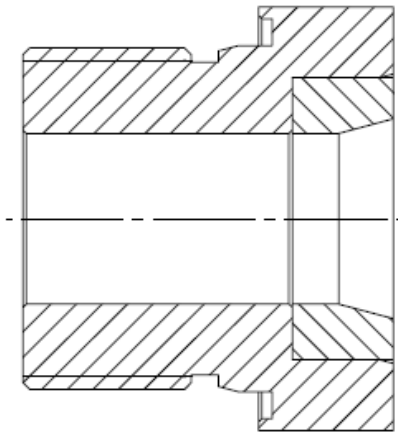


Written By	R. B. Parmar
Checked by	J. V. Mistry
Approved By	V. M. Shah
Revision	00
Rev./Rel. Dt.	04/05/2009
Page	Page 2 of 2

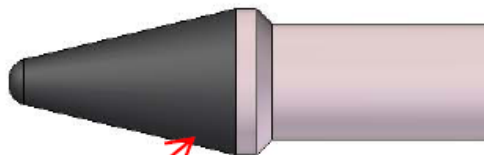
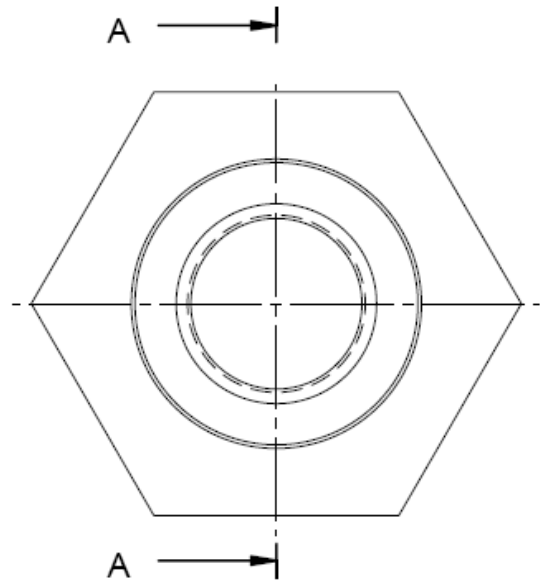
Needle



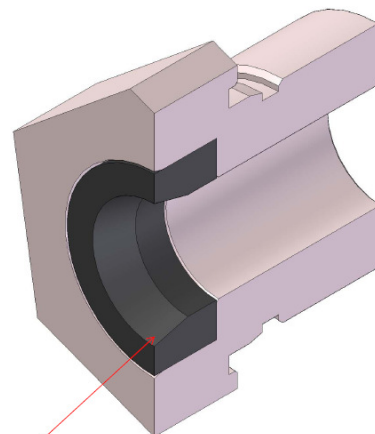
Seat



SECTION A-A



**Hard face/
Tungsten carbide inserted**



**Hard face/
Tungsten carbide inserted**

Note: This is for understanding only. Please refer to JVS for detailed design & technical information.