



JVS manufactures Cross over spools in various sizes and pressure ratings. Cross over spools are forged into a single piece or welded construction. Cross over spools have end connection that differ from one another in nominal size and pressure rating. Cross over spools are designed to avoid the bolt fit up fouling. Lifting eye bolts are provided if necessary. Each spool is drift tested to ensure that access to the well-bore is not restricted. Cross over spools are used for BOP spaceout and wellhead hookups.

Basic material of construction is alloy steel. For corrosion resistance, overlays like SS 316L or Inconel 625 can be incorporated to improve product life if required.

### **Rated working pressure**

The rated working pressure of the Cross over spool shall be the lowest rating of the end and outlet connectors on the adapter.

### **End and outlet connectors**

End and outlet connectors may flanged, studded, threaded, hub or other as per following API Standard.

Flanged or studded : API 6A Clause 10.1

Threaded : API 6A Clause 10.2

Other : API 6A Clause 10.18

Hub : API 16A Clause 5.3.4

Customers may specify any combination of end connections as well as overall height or length. When specified "minimum height (or length)", JVS Cross over spools have minimum overall height (or length) consistent with adequate clearance to accommodate studs, nuts, wrenches, and clamps where applicable.

Note: This is for understanding only. Please refer to JVS for detailed design & technical information.

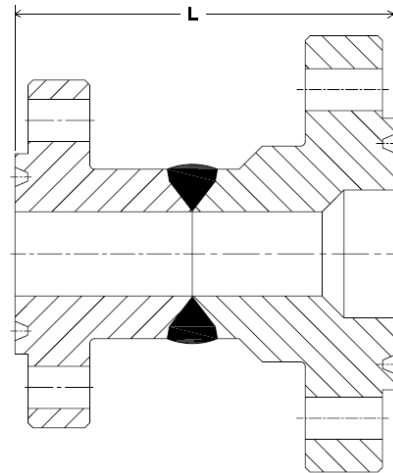
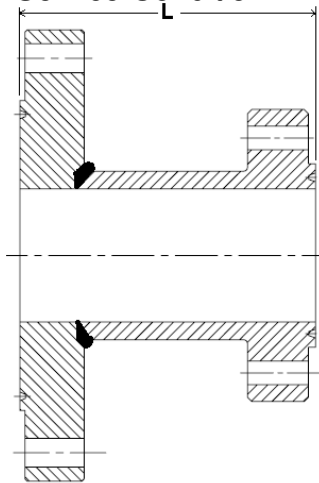
### Product range

Size : As per customer requirement

Pressure Class : 2000 PSI to 15000 PSI

Material of Construction : As per API 6A / 16A

Service Condition : General, Sour Services



Following Cross over spool of different sizes and pressure ratings have been manufactured & supplied.

Description	L (mm)
21 1/4" X 5M To 18 3/4" X 15M	610
18 3/4" X 15M To 11" X 10M	1460
18 3/4" X 15M To 13 5/8" X 10M	1000
18 3/4" X 15M To 13 5/8" X 5M	785
18 3/4" X 5M To 21 1/4" X 2M	650
18 3/4" X 15M To 20 3/4" X 3M	750
13 5/8" X 5M To 13 5/8" X 3M	800
13 5/8" X 15M To 13 5/8" X 10M	609
13 5/8" X 15M To 11" X 15M	765
13 5/8" X 15M To 11" X 10M	500
13 5/8" X 15M To 11" X 5M	560
13 5/8" X 10M To 13 5/8" X 5M	890
13 5/8" X 10M To 11" X 5M	700
13 5/8" X 3M To 7 1/16" X 5M	400
13 5/8" X 5M To 11" X 5M	400
13 5/8" X 3M To 11" X 3M	760
7 1/16" X 10M To 11" X 10M	650
7 1/16" X 5M To 7 1/16" X 10M	405

Note: This is for understanding only. Please refer to JVS for detailed design & technical information.