

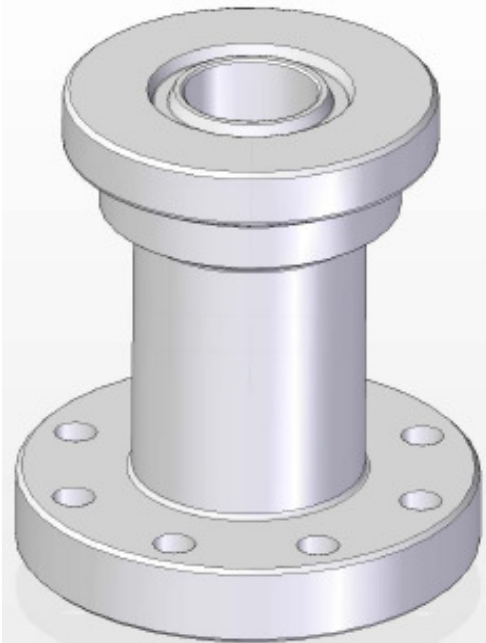


**HUB TO FLANGE CROSS OVER SPOOL  
(HFGXSPL) DATASHEET**

JVS - CS - DS - MKT - PCE - 006

Manufacturing Specification: API 6A & API 16A

Written By	R. B. Parmar
Checked by	J. V. Mistry
Approved By	V. M. Shah
Revision	00
Rev./Rel. Dt.	11/05/2009
Page	Page 1 of 2



JVS manufactures Cross over spools in various sizes and pressure ratings (2000 PSI to 15000 PSI). Cross over spools are forged into a single piece or welded construction. Cross over spools have end connection that differ from one another in nominal size and pressure rating. Cross over spools are designed to avoid the bolt fit up fouling. Lifting eye bolts are provided if necessary. Each spool is drift tested to ensure that access to the well-bore is not restricted.

Basic material of construction is alloy steel. However, stainless steel or other exotic material can be supplied. For corrosion resistance, overlays like SS 316L or Inconel 625 can be incorporated to improve product life if required.

**Rated working pressure**

The rated working pressure of the Cross over spool shall be the lowest rating of the end and outlet connectors on the adapter.

**End and outlet connectors**

Flanged : API 6A Clause 10.1 (19<sup>th</sup> Edition, July 2004)

Hub : API 16A Clause 5.3.4 (3<sup>rd</sup> Edition, June 2004)

Customers may specify any combination of end connections as well as overall height or length. When specified "minimum height (or length)", JVS Cross over spools have minimum overall height (or length) consistent with adequate clearance to accommodate studs, nuts and clamps.

Note: This is for understanding only. Please refer to JVS for detailed design & technical information.

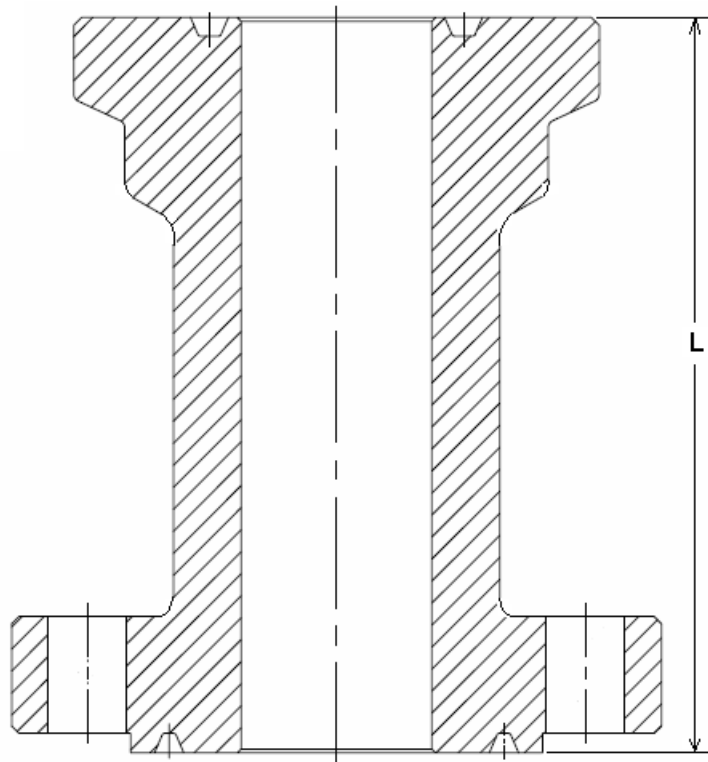
**Product range**

Size and end connection : As per customer requirement

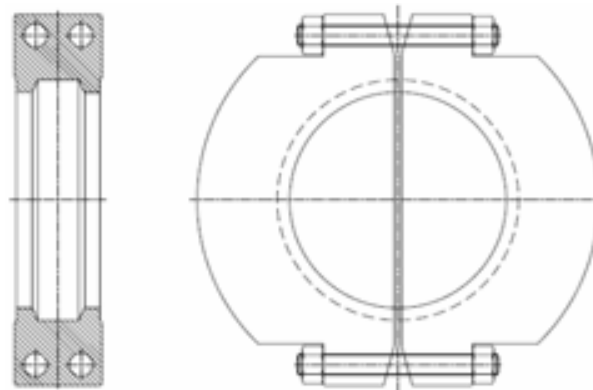
Pressure Class : 2000 PSI to 15000 PSI

Material of Construction : As per API 6A / 16A

Service Condition : General, Sour Services



Hub to Flange Cross Over



Hub Clamp Assembly Scheme

Note: This is for understanding only. Please refer to JVS for detailed design &amp; technical information.