

Diverter systems are used as a way to direct an uncontrolled flow from a shallow zone, not as means to kill the well. To minimize the chance of human error or equipment malfunction, the system must be kept as simple as possible. The system should consist of an annular preventer, drilling (diverter) spool, two diverter valves.

The diverter spool must be of a pressure rating equal to or greater than that of the annular preventer with two 6" minimum ID side outlets. No adapter or swages should be used to install the diverter valves. The spool should be inspected to assure its integrity prior to installation. All bolts must be installed and new ring gaskets used to minimize the possibility of leaks.



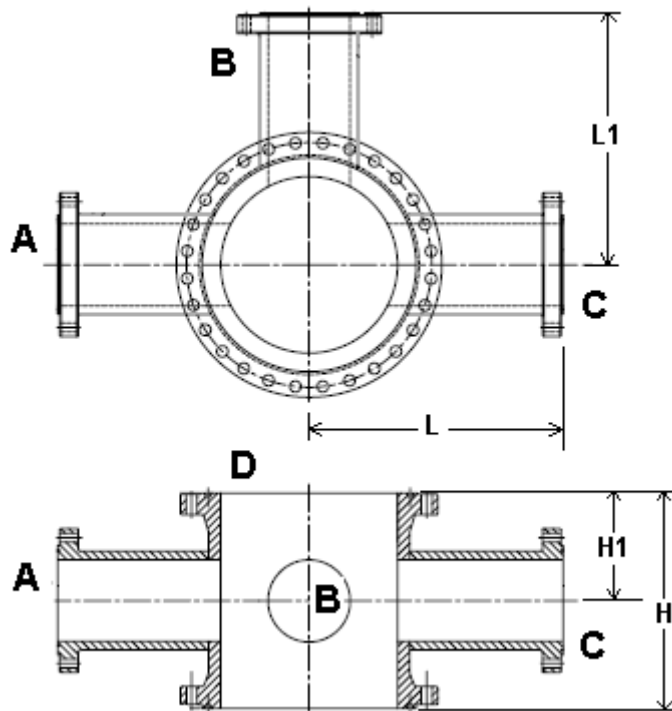
Drilling diverter spools can be supplied in all standard API 16A sizes and types with any combination of flange or hub sizes, materials grades, pressure rating and PSL level. Each drilling spool is manufactured to the customer's requirements. Welding performed conform to the applicable API standard and the provisions of ASME Section IX. Each spool is drift tested to ensure that access to the well-bore is not restricted. Basic material of construction is alloy steel. For corrosion resistance, overlays like SS 316L or Inconel 625 can be incorporated to improve product life if required.

Unless otherwise specified, each drilling spool is manufactured to the minimum length needed for clamp and/or bolting clearances.

The end-to-end dimension for drilling spools shall be the overall height from the bottom face of the bottom connection to the top face of the top connection.

Note: This is for understanding only. Please refer to JVS for detailed design & technical information.

Written By	R. B. Parmar
Checked by	J. V. Mistry
Approved By	V. M. Shah
Revision	00
Rev./Rel. Dt.	06/05/2009
Page	Page 2 of 2



Diverter valves

The diverter valves should be installed immediately adjacent to the diverter spool. This is to compensate for an overboard line failure, since the valve being adjacent to the diverter spool it eliminates any chance of human problems in piping between spool and valve. The actuator can be hooked up to BOP control unit for quick shut-off of the diverter.

Diverter valves with quarter turn hydraulic actuator



Note: This is for understanding only. Please refer to JVS for detailed design & technical information.