

JVS manufactures Weld Neck Flanges in various sizes and pressure ratings as per API 6A. Basic material of construction is low alloy steel. For corrosion resistance, normally we provide SS overlay on ring groove.

API 6A Weld Neck Flange pressure rating & size ranges:

Rated working pressure (PSI)	Flange size range		API 6A reference (19 th Edition, July 2004)
	Type 6B (in)	Type 6BX (in)	
2000	2 - 1/16" To 21 1/4"	-	Table no. 36 on pg. no. 114
3000	2 - 1/16" To 20 3/4"	-	Table no. 37 on pg. no. 117
5000	2 - 1/16" To 11"	-	Table no. 38 on pg. no. 120
10000	-	1 - 13/16" To 16 - 3/4"	Table no. 42 on pg. no. 129
15000	-	1 - 13/16" To 7 - 1/16"	Table no. 42 on pg. no. 129
20000	-	1 - 13/16" To 7 - 1/16"	Table no. 43 on pg. no. 131

Type 6B flanges:

Type 6B flanges are of the ring joint type and are not designed for face-to-face make-up. The connection make-up bolting force reacts on the metallic ring gasket. Type 6B flanges are of through bolted or studded design.

Dimensions for 6B flanges weld neck type shall conform to Table 36, Table 37 and Table 38 of API 6A (19th Edition, July 2004) as applicable.

Type 6BX flanges:

Type 6BX flanges are of the ring joint type and designed with a raised face. Depending on the tolerances, the connection make-up bolting force may react on the raised face of the flange when the gasket has been properly seated. This support prevents damage to the flange or gasket from excessive bolt torque. Therefore, one of the flanges in 6BX connection shall have a raised face. Type 6BX flanges are of through bolted or studded design. Face-to-face contact is not necessary for the proper functioning of the 6BX flange.

Dimensions for 6BX flanges weld neck type shall conform to Table 42 or Table 43 of API 6A (19th Edition, July 2004) as applicable.

Note: This is for understanding only. Please refer to JVS for detailed design & technical information.

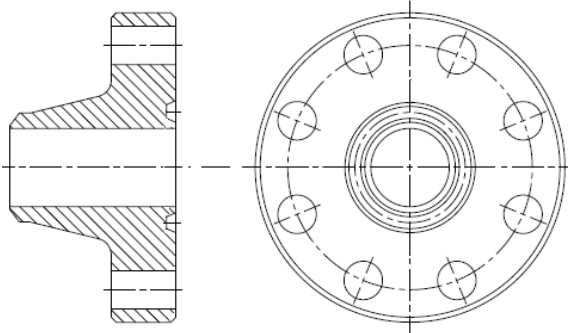
Product range

Size : As per customer requirement

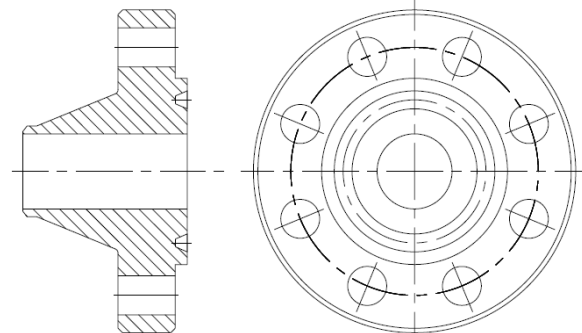
Pressure Class : 2000 PSI to 15000 PSI

Material of Construction : As per API 6A

Service Condition : General, Sour Services



Type 6B Weld Neck Flange



Type 6BX Weld Neck Flange

Following Weld Neck Flange of different sizes and pressure ratings have been manufactured & supplied as per the customer requirement.

Type 6B			Type 6BX	
2000 PSI (13,8 Mpa)	3000 PSI (20,7 Mpa)	5000 PSI (34,5 Mpa)	10,000 PSI (69,0 Mpa)	15,000 PSI (103,5 Mpa)
2 1/16" X 2M	2 1/16" X 3M	2 1/16" X 5M	1 13/16" X 10M	1 13/16" X 15M
2 9/16" X 2M	2 9/16" X 3M	2 9/16" X 5M	2 1/16" X 10M	2 1/16" X 15M
3 1/8" X 2M	3 1/8" X 3M	3 1/8" X 5M	2 9/16" X 10M	2 9/16" X 15M
4 1/16" X 2M	4 1/16" X 3M	4 1/16" X 5M	3 1/16" X 10M	3 1/16" X 15M
5 1/8" X 2M	5 1/8" X 3M	5 1/8" X 5M	4 1/16" X 10M	4 1/16" X 15M
7 1/16" X 2M	7 1/16" X 3M	7 1/16" X 5M	5 1/8" X 10M	5 1/8" X 15M
9" X 2M	9" X 3M	9" X 5M	7 1/16" X 10M	7 1/16" X 15M
11" X 2M	11" X 3M	11" X 5M	9" X 10M	*9" X 15M
13 5/8" X 2M	13 5/8" X 3M	*13 5/8" X 3M	11" X 10M	*11" X 15M
16 3/4" X 2M	16 3/4" X 3M	*16 3/4" X 3M	13 5/8" X 10M	*13 5/8" X 15M
21 1/4" X 2M	20 3/4" X 3M	*21 1/4" X 2M	16 3/4" X 10M	*18 3/4" X 10M
*26 3/4" X 2M	*26 3/4" X 2M		*18 3/4" X 10M	
*30" X 2M	*30" X 2M		*21 1/4" X 10M	

** Marked size are also covered in our manufacturing range as per the customer specific requirement.

Note: This is for understanding only. Please refer to JVS for detailed design & technical information.