

JVS manufactures Blind Flanges in various sizes and pressure ratings as per API 6A. Basic material of construction is low alloy steel. For corrosion resistance, normally we provide SS overlay on ring groove.

API 6A Blind Flange pressure rating & size ranges:

| Rated working pressure (PSI) | Flange size range | |
|------------------------------|----------------------|--------------------|
| | Type 6B (in) | Type 6BX (in) |
| 2000 | 2 - 1/16" To 21 1/4" | 26 3/4" To 30" |
| 3000 | 2 - 1/16" To 20 3/4" | 26 3/4" To 30" |
| 5000 | 2 - 1/16" To 11" | 13 5/8" To 21 1/4" |
| 10000 | - | 5 1/8" To 21 1/4" |
| 15000 | - | 5 1/8" To 18 3/4" |
| 20000 | - | 7 1/16" To 13 5/8" |

Type 6B flanges:

Type 6B flanges are of the ring joint type and are not designed for face-to-face make-up. The connection make-up bolting force reacts on the metallic ring gasket. Type 6B flanges are of through bolted or studded design.

Dimensions for 6B flanges blind type shall conform to Table 36, Table 37 & Table 38 with reference to figure no. 8 on pg. no. 108 of API 6A (19th Edition, July 2004) as applicable.

Type 6BX flanges:

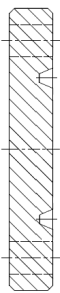
Type 6BX flanges are of the ring joint type and designed with a raised face. Depending on the tolerances, the connection make-up bolting force may react on the raised face of the flange when the gasket has been properly seated. This support prevents damage to the flange or gasket from excessive bolt torque. Therefore, one of the flanges in 6 BX connection shall have a raised face. Type 6BX flanges are of through bolted or studded design. Face-to-face contact is not necessary for the proper functioning of the 6BX flange.

Dimensions for 6BX flanges blind type shall conform to Table 46 of API 6A (19th Edition, July 2004) as applicable.

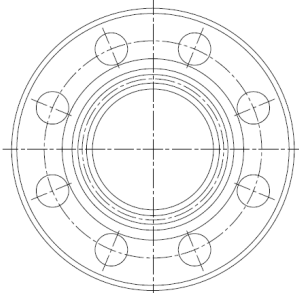
Note: This is for understanding only. Please refer to JVS for detailed design & technical information.

Product range

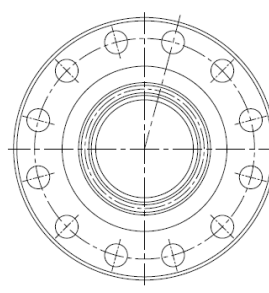
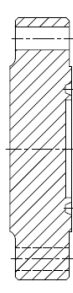
Size : As per customer requirement
 Pressure Class : 2000 PSI to 20000 PSI
 Material of Construction : As per API 6A
 Service Condition: General, Sour Services



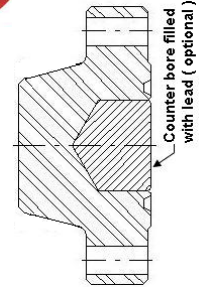
Type 6B Blind Flange



Type 6BX Blind Flange



Type 6BX Target Flange



Target Flanges: Used to cushion and reduce the erosive effect of high velocity abrasive fluid. Application of Target flange includes buffer chamber, manifolds and high pressure lines where there is high pressure & high velocity fluid is passing. Lead can be filled into the counter bore as per customer requirement.

Following Blind Flange & Target Flange of different sizes and pressure ratings have been manufactured & supplied as per the customer requirement. Dimensions for Target Flanges shall conform to Table 44 & Table 45 of API 6A as applicable.

| 2000 PSI (13,8 Mpa) | | 3000 PSI (20,7 Mpa) | | 5000 PSI (34,5 Mpa) | | 10,000 PSI (69,0 Mpa) | | 15,000 PSI (103,5 Mpa) | | 20,000 PSI (138 Mpa) | |
|------------------------|---------|------------------------|---------|------------------------|---------|--------------------------|---------|---------------------------|---------|-------------------------|---------|
| 6B | 6BX | 6B | 6BX | 6B | 6BX | 6BX | | 6BX | | 6BX | |
| 2 1/16" | 26 3/4" | 2 1/16" | 26 3/4" | 2 1/16" | 13 5/8" | *2 1/16" | 5 1/8" | * 13/16" | 5 1/8" | * 13/16" | 7 1/16" |
| 2 9/16" | 30" | 2 9/16" | 30" | 2 9/16" | 16 3/4" | *4 1/16" | 7 1/16" | *2 1/16" | 7 1/16" | *2 1/16" | 9" |
| 3 1/8" | | 3 1/8" | | 3 1/8" | 18 3/4" | | 9" | *2 9/16" | 9" | *2 9/16" | 11" |
| 4 1/16" | | 4 1/16" | | 4 1/16" | 21 1/4" | | 11" | *3 1/16" | 11" | *3 1/16" | 13 5/8" |
| 5 1/8" | | 5 1/8" | | 5 1/8" | | | 13 5/8" | *4 1/16" | 13 5/8" | *4 1/16" | |
| 7 1/16" | | 7 1/16" | | 7 1/16" | | | 16 3/4" | | 18 3/4" | | |
| 9" | | 9" | | 9" | | | 18 3/4" | | | | |
| 11" | | 11" | | 11" | | | 21 1/4" | | | | |
| 13 5/8" | | 13 5/8" | | | | | | | | | |
| 16 3/4" | | 16 3/4" | | | | | | | | | |
| 21 1/4" | | 20 3/4" | | | | | | | | | |

'**' Marked size are also covered in our manufacturing range as per the customer specific requirement.

Note: This is for understanding only. Please refer to JVS for detailed design & technical information.