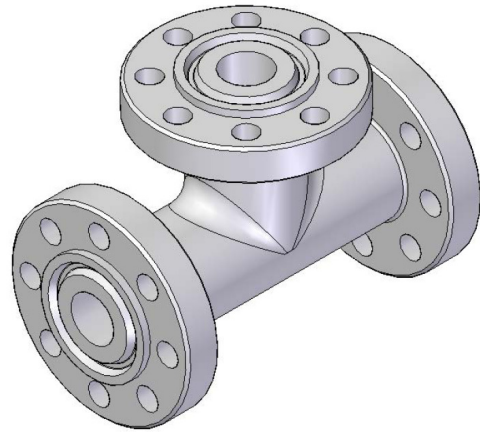


Scope:

Crosses & Tees are used in pipelines and manifolds to divert, bypass or distribute the fluid flow.



Flanged Cross



Flanged Tee

JVS manufactures Flanged Crosses & Tees in various sizes and pressure ratings as specified in Table 75 of API 6A (19th Edition, July 2004).

As specified in API 6A (19th Edition, July 2004) clause 10.10.2, for following two size of crosses & tees (e.g. 3 1/16" and 4 1/4") oversize bores are permitted when it is required to fix with the valves.

End connections - Integral Flange

Boundary Dimensions - Bore and centerline-to-face dimension shall conform to Table 75 of API 6A (19th Edition, July 2004).

Material - Basic material of construction is alloy steel. For corrosion resistance, overlays like SS 316L or Inconel 625 on ring groove can be incorporated to improve product life if required. Normally we are providing SS overlay on sealing ring groove.

Testing - Flanged Crosses and Tees shall successfully complete hydrostatic body test and drift test as specified in clause 7.4.9 of API 6A (19th Edition, July 2004).

Note: Refer JVS Standard Operating Procedure Manual Section No. QC-010 for testing of Flanged Crosses & Tees.

Product range

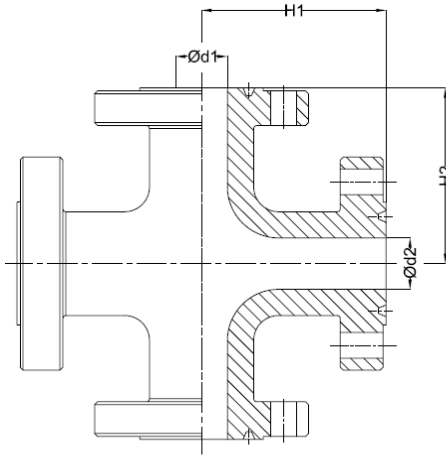
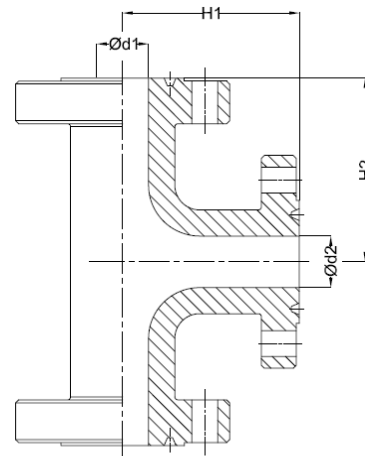
Size : As per customer requirement

Pressure Class : 2000 PSI to 20000 PSI

Material of Construction : As per API 6A

Service Condition : General, Sour Services

Note: This is for understanding only. Please refer to JVS for detailed design & technical information.


Flanged Cross

Flanged Tee

2000 PSI				3000 PSI				5000 PSI			
Φd1	Φd2	H2	H1	Φd1	Φd2	H2	H1	Φd1	Φd2	H2	H1
2 1/16	2 1/16	5.81	5.81	3 1/8	2 1/16	7.31	7.81	2 1/16	2 1/16	7.31	7.31
2 9/16	2 1/16	5.94	6.31	3 1/8	2 9/16	7.88	7.94	2 9/16	2 1/16	7.44	7.88
2 9/16	2 9/16	6.56	6.56	3 1/8	3 1/8	7.56	7.56	2 9/16	2 9/16	8.31	8.31
3 1/8	2 1/16	6.06	6.69	4 1/16	2 1/16	7.56	8.81	3 1/8	2 1/16	7.69	8.31
3 1/8	2 9/16	6.56	6.81	4 1/16	2 9/16	8.12	8.94	3 1/8	2 9/16	8.25	8.44
3 1/8	3 1/8	7.06	7.06	4 1/16	3 1/8	8.06	8.81	3 1/8	3 1/8	9.31	9.31
4 1/16	2 1/16	6.31	7.94	4 1/16	4 1/16	9.06	9.06	4 1/16	2 1/16	7.94	9.19
4 1/16	2 9/16	6.81	8.06	-	-	-	-	4 1/16	2 9/16	8.50	9.31
4 1/16	3 1/8	7.19	8.19	-	-	-	-	4 1/16	3 1/8	8.94	9.56
4 1/16	4 1/16	8.56	8.56	-	-	-	-	4 1/16	4 1/16	10.81	10.81

10000 PSI				15000 PSI				20000 PSI			
Φd1	Φd2	H2	H1	Φd1	Φd2	H2	H1	Φd1	Φd2	H2	H1
2 1/16	1 13/16	6.67	6.84	2 1/16	1 13/16	7.34	7.41	1 1/16	1 1/16	8.94	8.94
2 1/16	2 1/16	6.92	6.92	2 1/16	2 1/16	7.62	7.62	2 1/16	1 13/16	9.25	9.53
2 9/16	1 13/16	6.95	7.47	2 9/16	1 13/16	7.59	8.03	2 1/16	2 1/16	9.84	9.84
2 9/16	2 1/16	7.20	7.55	2 9/16	2 1/16	7.88	8.25	2 9/16	1 13/16	9.56	10.28
2 9/16	2 9/16	7.83	7.83	2 9/16	2 9/16	8.50	8.50	2 9/16	2 1/16	10.16	10.59
3 1/16	1 13/16	7.23	8.22	3 1/16	1 13/16	7.86	8.69	2 9/16	2 9/16	10.91	10.91
3 1/16	2 1/16	7.48	8.30	3 1/16	2 1/16	8.16	8.91	3 1/16	1 13/16	9.94	10.91
3 1/16	2 9/16	8.11	8.58	3 1/16	2 9/16	8.78	9.16	3 1/16	2 1/16	10.53	10.22
3 1/16	3 1/16	8.86	8.86	3 1/16	3 1/16	9.44	9.44	3 1/16	2 9/16	11.28	11.53
4 1/16	1 13/16	7.81	9.25	4 1/16	1 13/16	8.69	10.25	3 1/16	3 1/16	11.91	11.91
4 1/16	2 1/16	8.06	9.33	4 1/16	2 1/16	8.97	10.47	4 1/16	1 13/16	11.12	12.66
4 1/16	2 9/16	8.69	9.61	4 1/16	2 9/16	9.59	10.72	4 1/16	2 1/16	11.72	12.66
4 1/16	3 1/16	9.44	9.89	4 1/16	3 1/16	10.25	11.00	4 1/16	2 9/16	12.47	13.28
4 1/16	4 1/16	10.34	10.34	4 1/16	4 1/16	11.69	11.69	4 1/16	3 1/16	13.09	13.66
-	-	-	-	-	-	-	-	4 1/16	4 1/16	14.84	14.84

Note: This is for understanding only. Please refer to JVS for detailed design & technical information.